

Name:

ANSWERS!

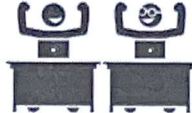
Class:



Communication



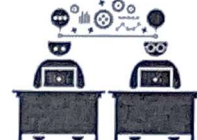
Successful Partnership



Encouragement



Solving Problem Together



Collaboration

Question 01

You take survey data at a busy town park about what type of car adults drive and how many children they have.

Complete the tables below.

FREQUENCY TABLE

| | Sedan / Hatchback | SUV / Minivan | TOTAL |
|-------------------|-------------------|---------------|-------|
| No Children | 90 | 20 | 110 |
| One Child | 90 | 130 | 220 |
| More than 1 Child | 30 | 140 | 170 |
| TOTAL | 210 | 290 | 500 |

RELATIVE FREQUENCY TABLE

| | Sedan / Hatchback | SUV / Minivan | TOTAL |
|-------------------|-------------------------------|--------------------------------|-------|
| No Children | $\frac{90}{110} \approx 82\%$ | $\frac{20}{110} \approx 18\%$ | 100% |
| One Child | $\frac{90}{220} \approx 41\%$ | $\frac{130}{220} \approx 59\%$ | 100% |
| More than 1 Child | $\frac{30}{170} \approx 18\%$ | $\frac{140}{170} \approx 82\%$ | 100% |

Question 02

You take survey data at a college graduation about courses of study and whether or not the graduate has investments in the stock exchange.

Complete the tables below.

FREQUENCY TABLE

| | Has Stock Investment | Does Not Have Stock Investment | TOTAL |
|--------------------------------------|----------------------|--------------------------------|-------|
| Degree in English / Humanities | 60 | 110 | 170 |
| Degree in Math / Science | 60 | 20 | 80 |
| Degree in Business / Health Sciences | 100 | 50 | 150 |
| TOTAL | 220 | 180 | 400 |

RELATIVE FREQUENCY TABLE

| | Has Stock Investment | Does Not Have Stock Investment | TOTAL |
|--------------------------------------|--------------------------------|--------------------------------|-------|
| Degree in English / Humanities | $\frac{60}{170} \approx 35\%$ | $\frac{110}{170} \approx 65\%$ | 100% |
| Degree in Math / Science | $\frac{60}{80} \approx 75\%$ | $\frac{20}{80} \approx 25\%$ | 100% |
| Degree in Business / Health Sciences | $\frac{100}{150} \approx 67\%$ | $\frac{50}{150} \approx 33\%$ | 100% |