

Name: ANSWERS! Class:



A Red Train is moving at a speed of 50 miles per hour.

A Blue Train is moving at a speed twice as fast as the Red Train.

Part 1 Complete the tables

Red Train	Hours (x -axis)	0	1	3	5
	Miles (y -axis)	0	50	150	250

Blue Train	Hours (x -axis)	0	1	3	5
	Miles (y -axis)	0	100	300	500

Part 2

Write an equation for the red train where y represents the miles traveled and x represents the number of hours.

$$y = 50x$$

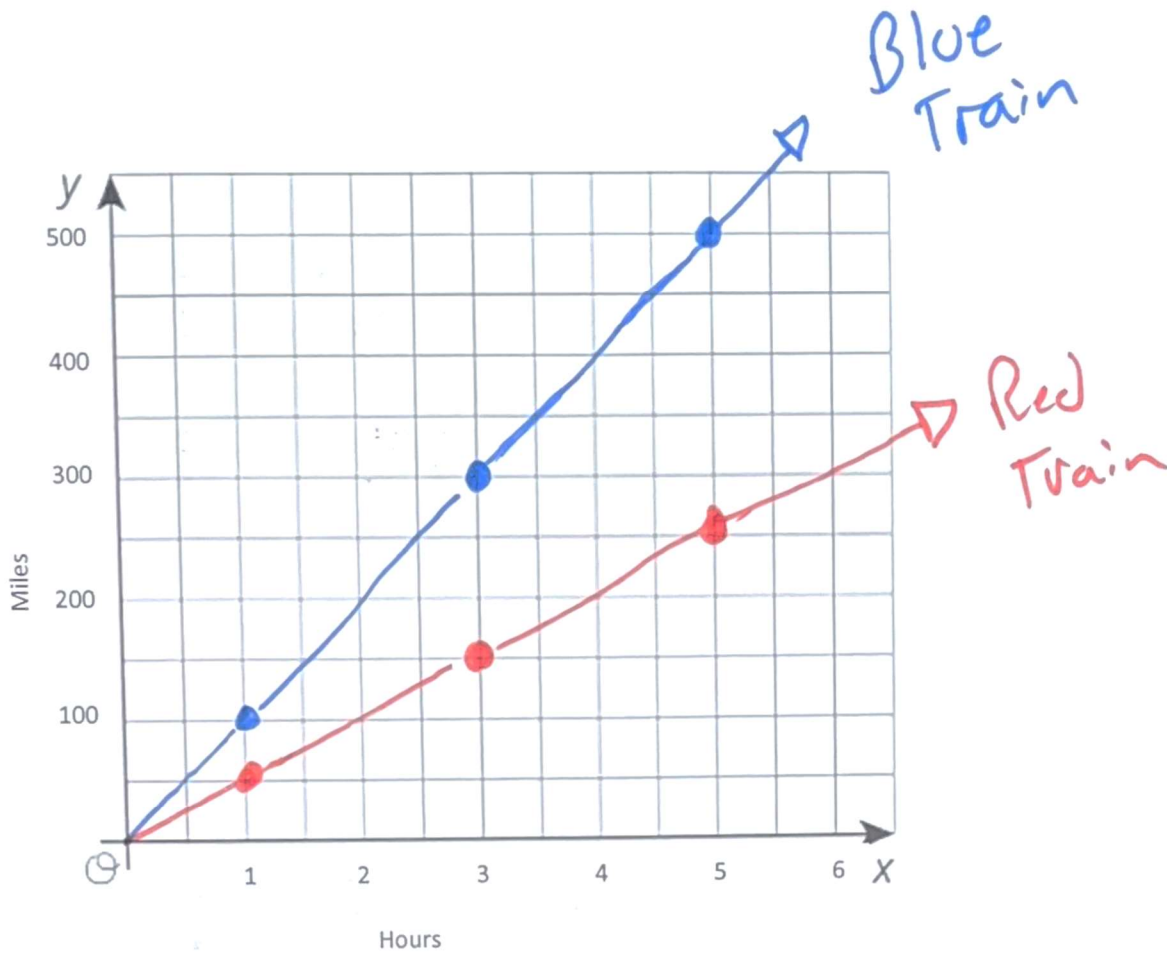
Write an equation for the blue train where y represents the miles traveled and x represents the number of hours.

$$y = 100x$$

Part 3

Graph a line for the Red Train.

Graph another line for the Blue Train.



- ① Both proportional relationships (straight lines including origin)
- ② Blue twice as steep!