

Name: **ANSWERS!** Class:



Communication



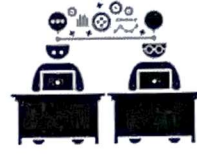
Successful Partnership



Encouragement

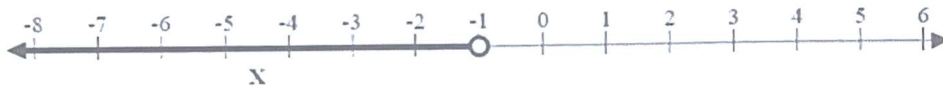


Solving Problem Together



Collaboration

Question 01



(a)
 $x < -1$

(b)
 $x > -1$

(c)
 $x \geq -1$

(d)
 $x \leq -1$

Question 02



(a)
 $30 < x$
 $x > 30$

(b)
 $30 > x$

(c)
 $30 \geq x$

(d)
 $30 \leq x$

Question 03



(a)
 $-60 < x$

(b)
 $-60 > x$

(c)
 $-60 \geq x$

(d)
 $-60 \leq x$
 $x \geq -60$

Question 04

Tyler goes to the store. His budget is \$125. Which inequality represents x , the amount, in dollars, that he can spend?

- (a) $x < 125$ (b) $x > 125$ (c) $x \geq 125$ (d) $x \leq 125$

He can spend exactly 125 dollars or any amount less

Question 05

Diego needs at least 3.5 pounds of clay for a project. Which inequality represents x , the amount of clay, in pounds, that he needs?

- (a) $x < 3.5$ (b) $x > 3.5$ (c) $x \geq 3.5$ (d) $x \leq 3.5$

He needs exactly 3.5 pounds or more

Question 06

Jada is making lemonade for a garden party. She expects a total of 50 to 80 people to attend. She plans to make 2 cups of lemonade for each person.

Let n represent the number of people at the party. Let c represent the cups of lemonade needed.

Select all of the inequalities that represent this situation.

- (a) $50 \geq n$ (b) $50 \leq n \leq 80$ (c) $c = 2n$ (d) $c = \frac{1}{2}n$ (e) $100 \leq c \leq 160$ (f) $50 \leq c \leq 80$

Question 07

Mai is planning an ice cream party. She expects a total of 5 to 10 people to attend. She expects each person to eat 2 or 3 scoops of ice cream.

Let n represent the number of people at the party. Let c represent the scoops of ice cream needed.

Select all of the inequalities that represent this situation.

- (a) $5 \leq n \leq 10$ (b) $10 \leq n$ (c) $10 \leq c \leq 20$ (d) $15 \leq c \leq 30$ (e) $10 \leq c \leq 30$