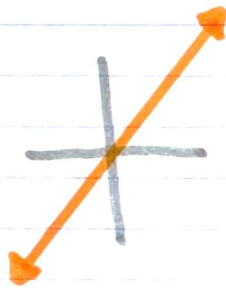
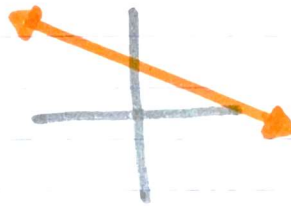


Lesson 5-1 → Introduction to Exponential Functions

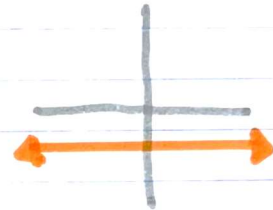
Linear functions are $y = mx + b$ with uniform rates of change



every hour
you go 50
more miles



every minute
the temperature
drops 1 degree

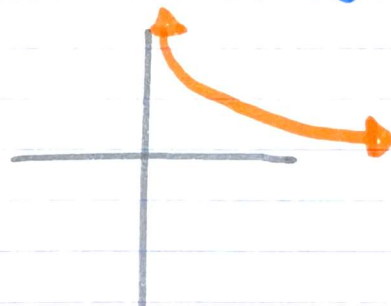


every second
the turtle
stays under
water

Exponential Functions have different kinds of changes



every month,
bacteria
in the sample
triples



every year,
the value of
a car is reduced
by $\frac{1}{3}$