

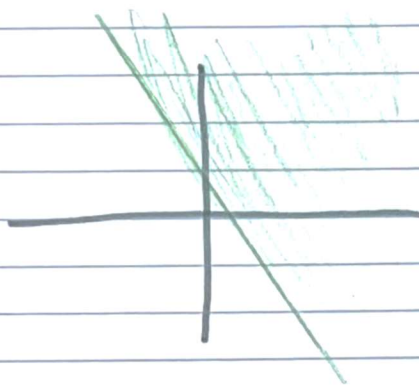
Lesson ²⁻⁹ ~~2-9~~ → Graphs from Standard Form Inequalities

Some inequalities are easy to graph, some are medium, some are tough ... you've seen them all

Easy → slope intercept

$$y \geq -2x + 3$$

negative slope
positive y-intercept

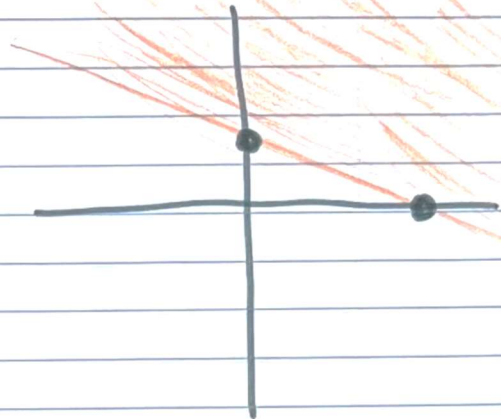


Medium \rightarrow standard form with
POSITIVE "y"
coefficient

$$2x + 5y \geq 20$$

Positive \rightarrow

find zeros $(0, 4)$
 $(10, 0)$

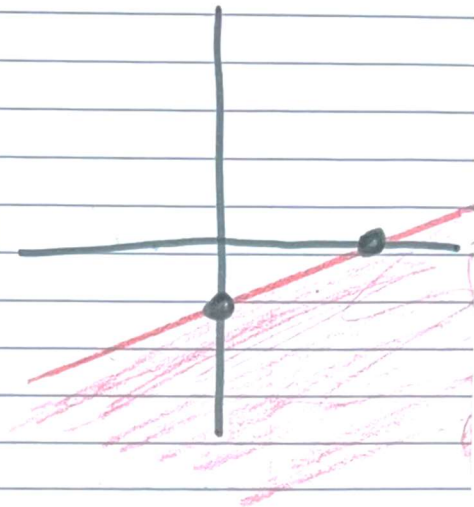


TUF \rightarrow standard form with
NEGATIVE "y"
coefficient

$$2x - 5y \geq 20$$

Negative \rightarrow

find zeros $(0, -4)$
* AND * $(10, 0)$
turn sign around



(or re-write in
slope-intercept
form as we
did earlier)