

Lesson 4-1 → T-Chart Graphs with $y = mx + b$

We can use a T-chart to go from $y = 2x + 3$ to a graph

x	y
0	
1	
2	

$$y = 2(0) + 3$$

$$y = 3$$

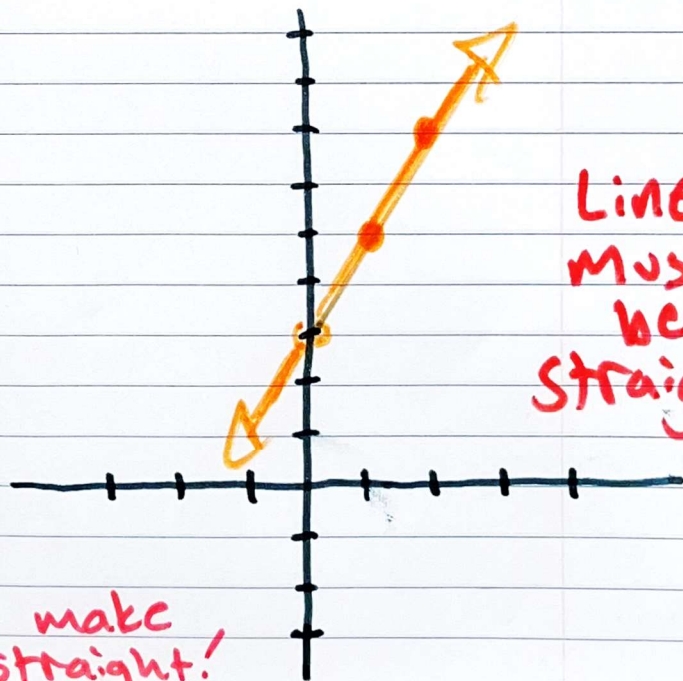
$$y = 2(1) + 3$$

$$y = 5$$

$$y = 2(2) + 3$$

$$y = 7$$

x	y
0	3
1	5
2	7



Line must be straight!

* Got 3 dots to make sure line is straight!

you can skip over tough
X-values if you want to!

$$y = \frac{1}{3}x + 2$$

X	Y
0	
1	
2	
3	
4	
5	
6	

$$y = \frac{1}{3}(0) + 2$$

$$y = 2$$

$$y = \frac{1}{3}(1) + 2$$

tuf!

$$y = \frac{1}{3}(2) + 2$$

tuf!

$$y = \frac{1}{3}(3) + 2$$

$$y = 3$$

$$y = \frac{1}{3}(4) + 2$$

tuf!

$$y = \frac{1}{3}(5) + 2$$

tuf!

$$y = \frac{1}{3}(6) + 2$$

$$y = 4$$

X	Y
0	2
3	3
6	4

