

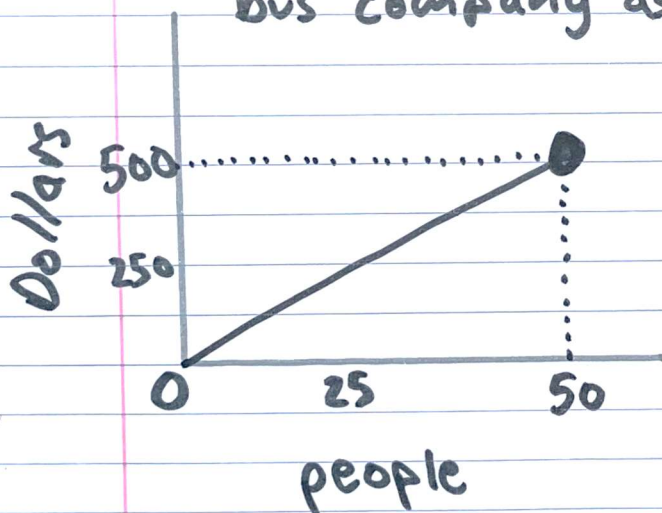
4-3

Lesson ~~4-3~~ → Domain and Range in the Real World

In the real world, a continuous graphed line can be deceiving.

Ask yourself → "can that really be an input?.... an output?"

The graph shows revenues earned by bus company as a function of riders



each ticket is \$10

$$y = 10x$$

$$f(x) = 10x$$

50 seats on bus!!!

Domain → whole numbers from 0 to 50

Range → multiples of 10 from 0 to 500

Hints!

① Time is infinitely divisible

Time is the independent variable

Time ~~is~~ ALWAYS should be X-axis

Time USUALLY is "All Real Numbers" from start to finish

→ exception is Monthly or yearly reports, etc.

② Don't confuse graph window with function's domain & range



Domain is all real numbers from 0 to 3

③ when inputs (x)

is limited

(for example, when
inputs can only be
whole numbers)

Then outputs (y)

will be limited too

(for example, only
multiples, etc.)

④ Don't chop people
in half!