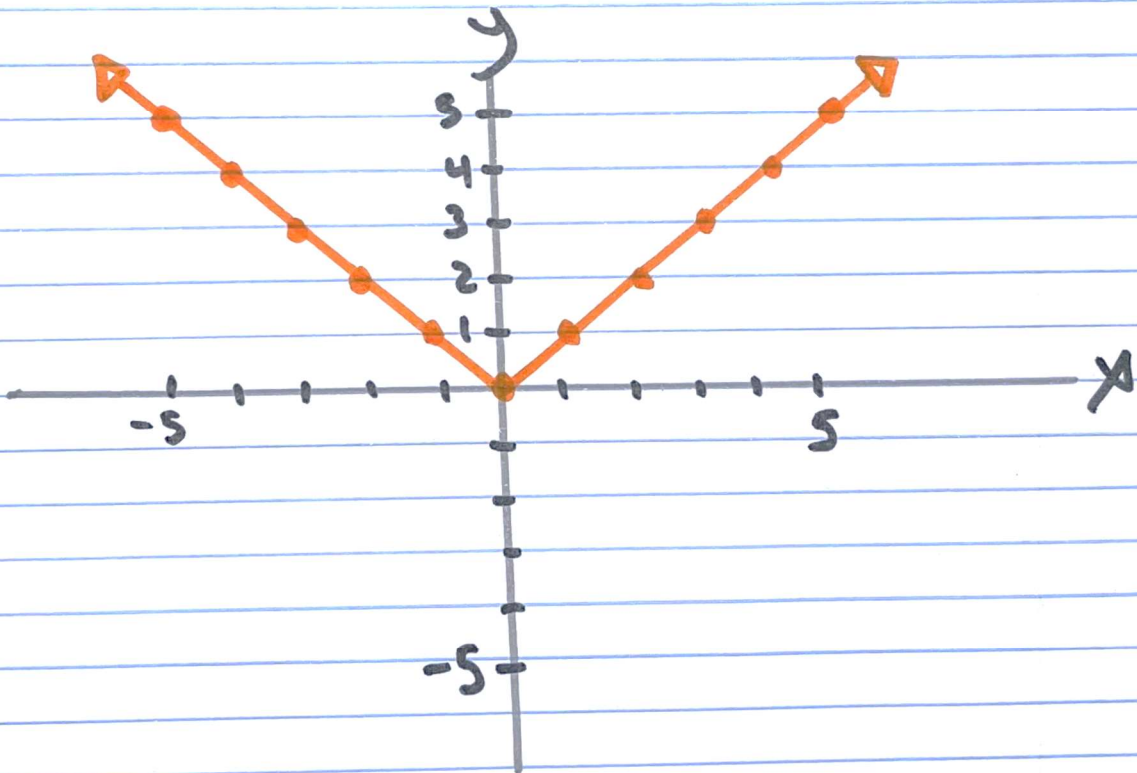


Lesson ~~4-13~~⁴⁻⁵ → Absolute Value Functions

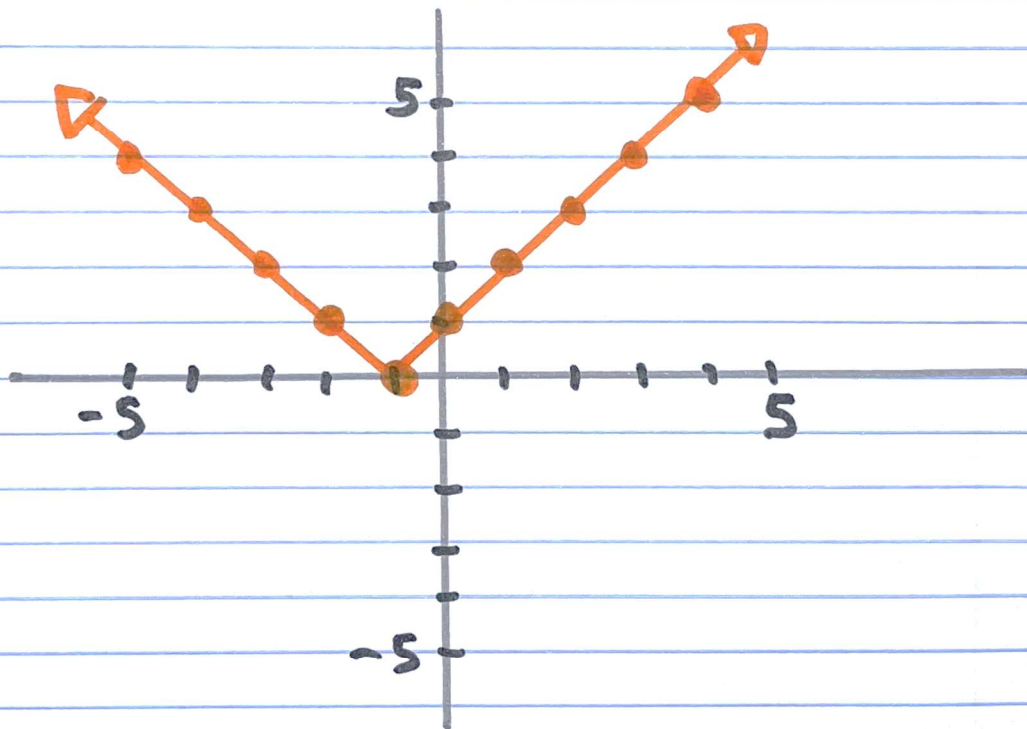
$$f(x) = |x|$$

x	-2	-1	0	1	2
$f(x)$	2	1	0	1	2



$$f(x) = |x+1|$$

x	-2	-1	0	1	2
$f(x)$	1	0	1	2	3



$$f(x) = |x| + 1$$

x	-2	-1	0	1	2
$f(x)$	3	2	1	2	3

