

Lesson 5-6 → Interpreting Graphs and Tables of Exponential Functions

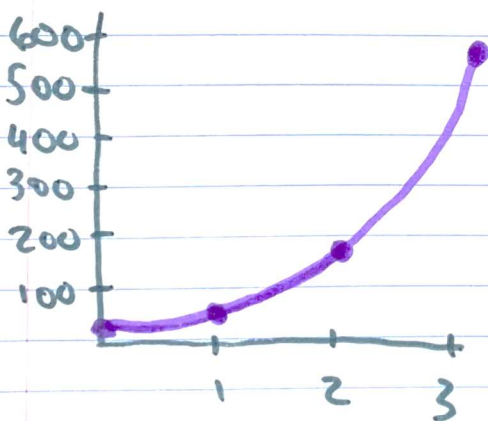
$$f(x) = a(1+r)^x$$

you can think of this part like a factor or multiplier

x	0	1	2	3	4
f(x)	20	60	180	540	1620

↑ x3 ↑ x3 ↑ x3 ↑ x3

WARNING!
NOT Linear
change in y
change in x



$$f(x) = 20(3)^x$$